



Elizabeth Woodville School

OCR

GCSE Fine Art

Virtual

Options Evening

Dep**ART**ment





Elizabeth Woodville School

**FINE ART
GCSE**



DepARTment

Why choose GCSE Fine Art?



- You are creative, have lots of ideas and enjoy making and creating things.
- **No written exam.** You will produce coursework throughout the two years worth 60% of your final grade. You will be given an exam project from the exam board in the January of Year 11 and take your 10 hour practical exam in April.
- **No essays** to do, all work at GCSE is practical.
- Learn exciting new techniques and ways of working.
- Have more time to spend creating higher quality work.
- Basic art skills are important, but more important is a desire to work hard and be open to new ways of approaching your work. You will find that by the end of the course you will have gained confidence in your skills, be much more creative and **you will make pieces of artwork that you could never have imagined making before!**



Why choose GCSE Fine Art?

Some of the work is time consuming, but if you keep up to date with tasks it won't be overwhelming. If you enjoy being creative, you will have fun doing the work.

MYTHS ABOUT ART GCSE

- **Too much work!**
There is no more work than any other subject, but you must make sure you keep up to date with your homework.
- **You have to be good at drawing**
- You will need to do some drawing but not loads as most of the time will be spent learning and using other techniques, you can express yourself in lots of different ways.
- **You should only choose Art if you want to be an artist or designer**
- Not necessarily. Of course, if you want a career in the Arts you will have to do GCSE but the skills you learn are transferable to many other careers including : forensic science, law, medicine, business.

Yes, there is some drawing involved but you will see on the following pages that drawing is only one aspect. The exam board requirement is that you 'record' - this can also be done using photography.

Department **ART**ment Elizabeth Woodville School



What sort of jobs would GCSE Fine Art lead to?

Set Designer	Potter	Architect	Photographer	Screen Printer
Art Teacher	Art Historian	Sculptor	Screen Printer	Art Professor
Graphic Designer	Weaver	JOB'S in the ARTS	Muralist	Interior Designer
Fashion Designer	Artist	Illustrator	Print Maker	Gallery Curator
Art Curator	Painter	Animator	Blacksmith	Carpenter

art director
 fashion designer
 web designer
 stylist
 set design artist
 painter
 storyboard artist
 graphic designer
 fashion illustrator
 game designer
 production artist
 animator
 creative director
 illustrator
 UX designer
 gallery owner
 interior design
 photographer
 character design
 sculptor



DepARTment



KEY STAGE 4 STRUCTURE

Year 10 (September - June)

Coursework Unit 1 NATURAL FORMS ceramic outcome

Year 11 (June Yr10 - December)

Coursework Unit 2 STRUCTURES 2D outcome

Year 11 - Exam board project

January - April.

The coursework is worth
60% of the final grade.

The exam board project
is worth 40%

Your work will be assessed using these four assessment objectives

A01- ARTISTS, CRITICAL ANALYSIS, ARTIST RESEARCH

A02- DEVELOPMENT-USE OF ART MATERIALS, PROCESSES, TECHNIQUES

A03- RECORD, OBSERVATIONS, PHOTOGRAPHY, ANNOTATIONS

A04- DESIGN IDEAS, FINAL RESPONSE, WRITTEN EVALUATION

They are all
equally
weighted at
25% each

Examples on the following pages

GCSE

What will you learn?

DepARTment



YEAR 10 STRUCTURES - NATURAL FORMS. CERAMIC SCULPTURE

- You will learn how to fulfill the exam board assessment objectives
- You will learn to analyse in more depth
- Through experimentation you will learn a range of print techniques
- You will learn to develop your drawing skills using a range of media
- You will learn to develop your photography skills based on your artist analysis
- You will learn to explore a greater range of media
- You will learn a range of presentation ideas
- Using a variety of media and approaches you will learn to develop your own ideas for a range of outcomes
- You will learn to extend your previously learnt ceramic skills to create much larger and complicated structures



GCSE

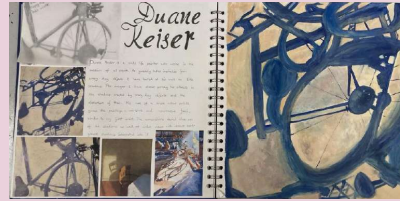
What will you learn?

DepARTment

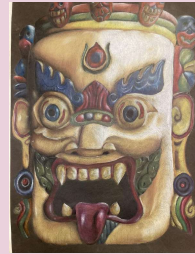


YEAR 11 STRUCTURES - MAN MADE FORMS. PAINTED OUTCOME

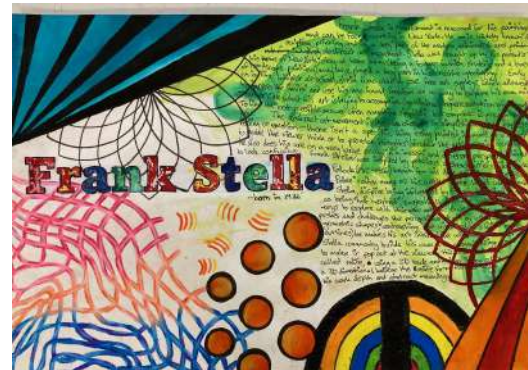
- You will learn to explore artists in more depth
- You will learn to create a much more personal outcome
- You will learn painting techniques and approaches
- You will learn to create work on a much larger scale
- You will be able to use photography as a recording technique to develop your work further



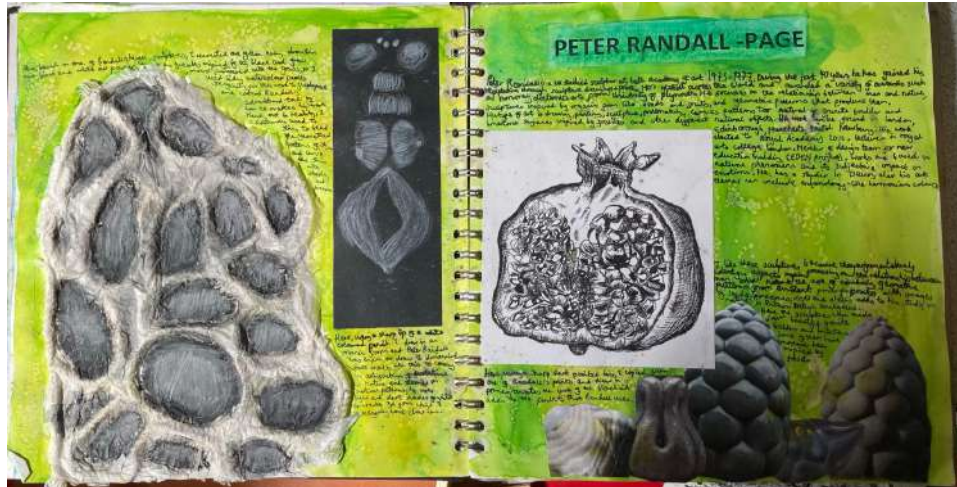
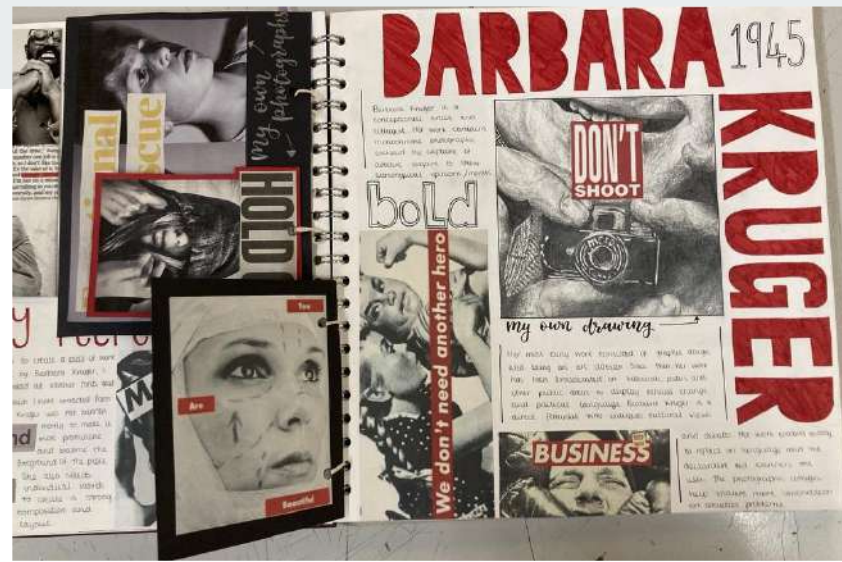
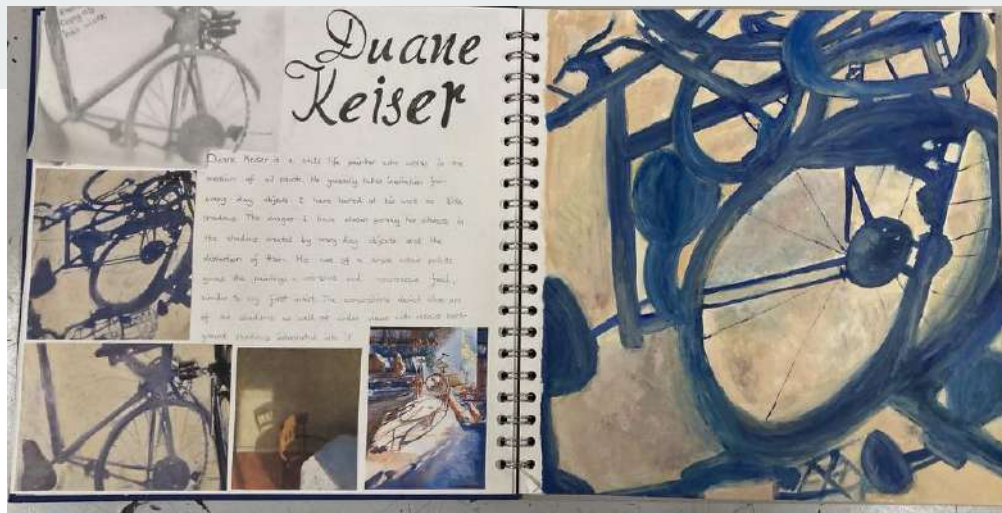
The deadline for coursework is January in Year 11. Then a new project is set by the exam board - this will run until April



A01- ARTISTS, CRITICAL ANALYSIS, ARTIST RESEARCH



DepARTment



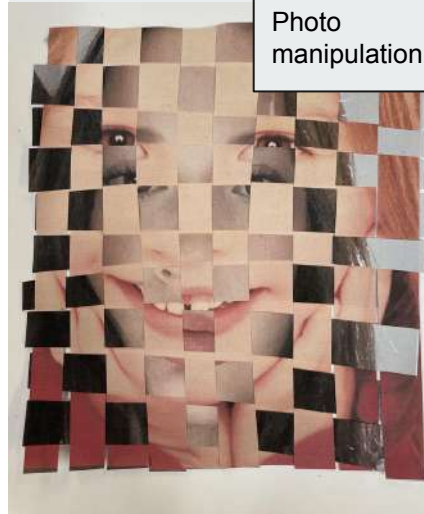
We study a large range of different artists

DepARTment

A02- DEVELOPMENT-USE OF ART MATERIALS, PROCESSES, TECHNIQUES

DepARTment

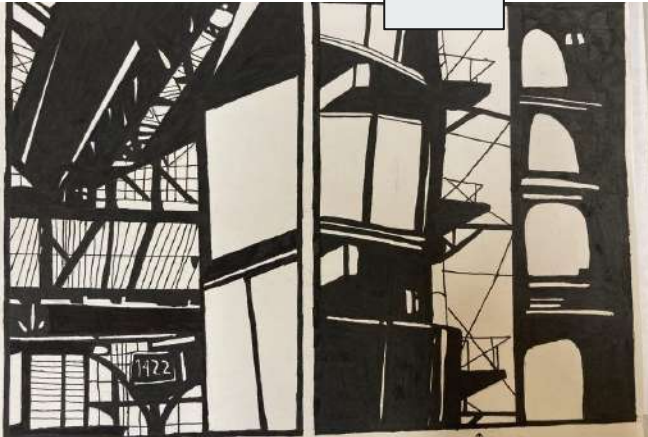
Photo
manipulation



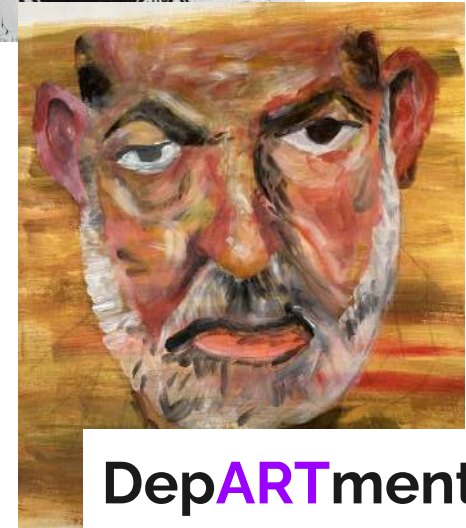
Lino printing



Pen



Collage and
paint



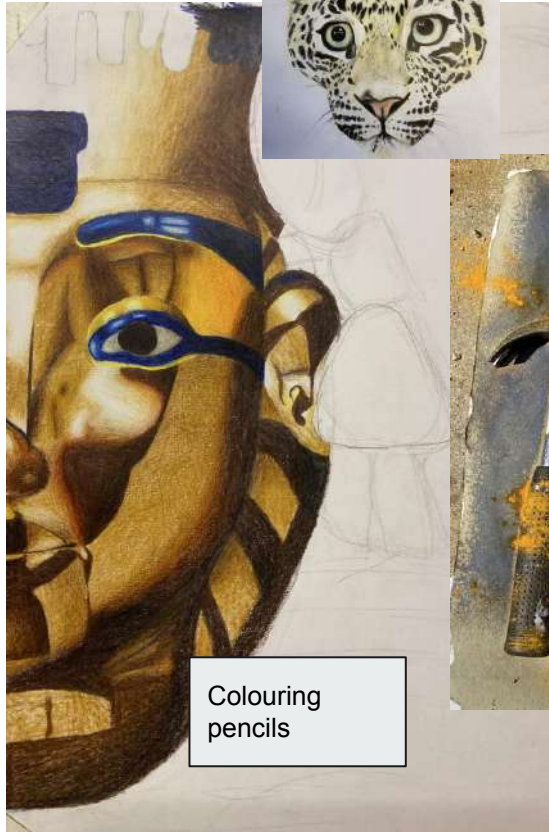
DepARTment



Cyanotypes



Paper manipulation and sculpture



Colouring pencils



Mono printing



Caramics



Card and modroc sculpture



Collagraph printing



DepARTment

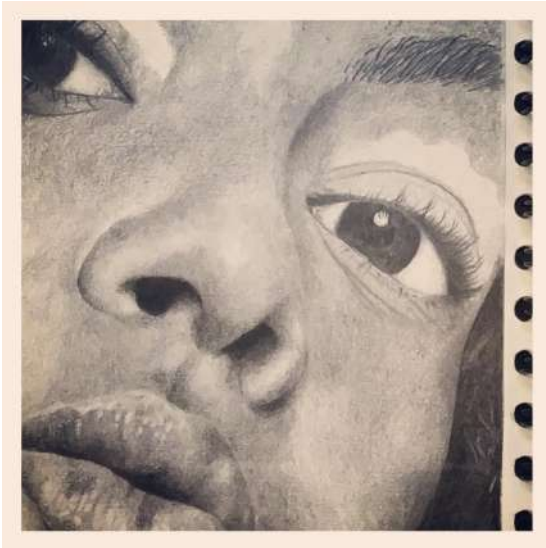


Stencil screen printing

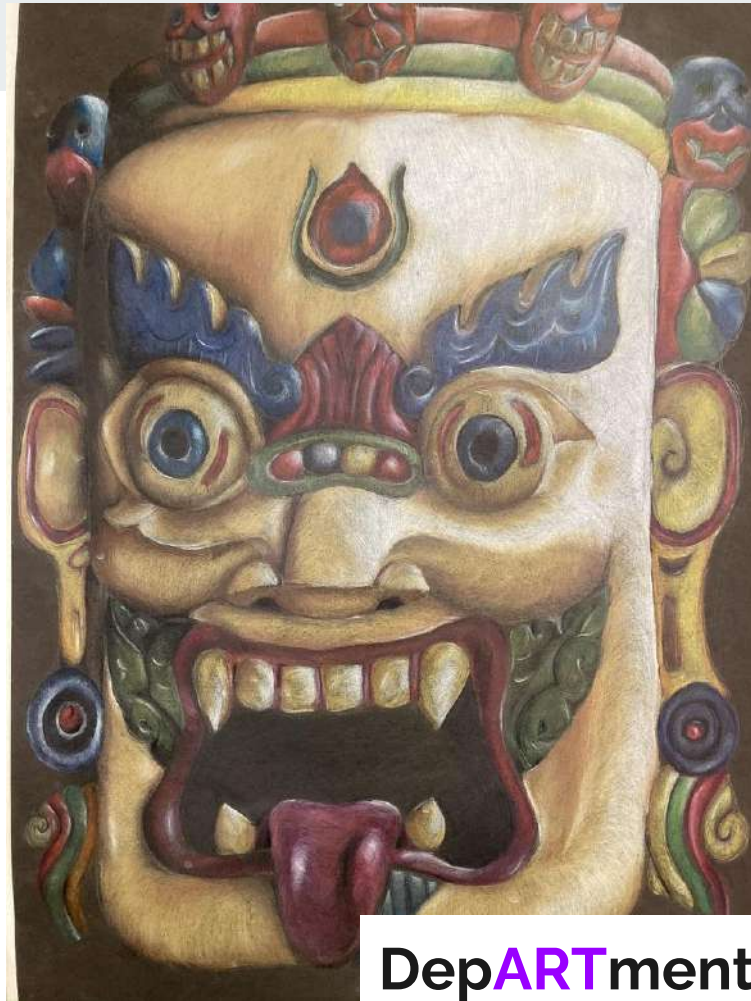
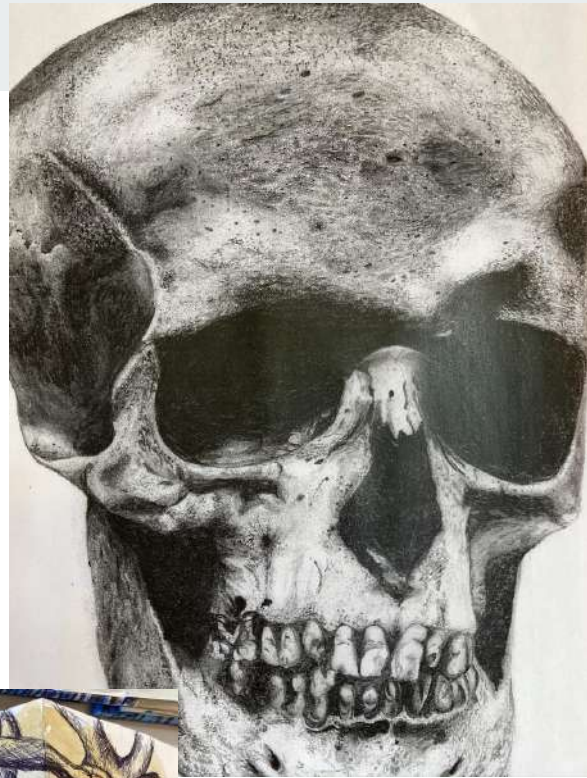


Paper sculpture and photography

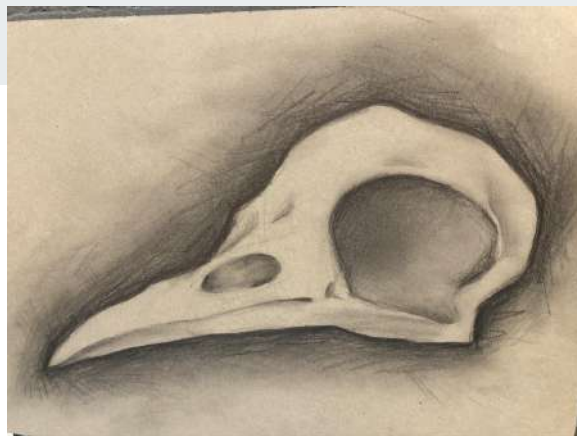
A03- RECORD, OBSERVATIONS, PHOTOGRAPHY, ANNOTATIONS



DepARTment



DepARTment

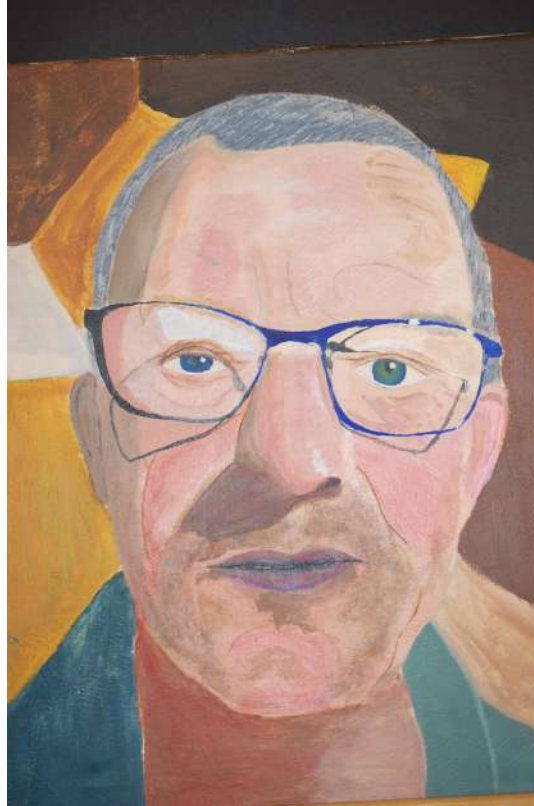
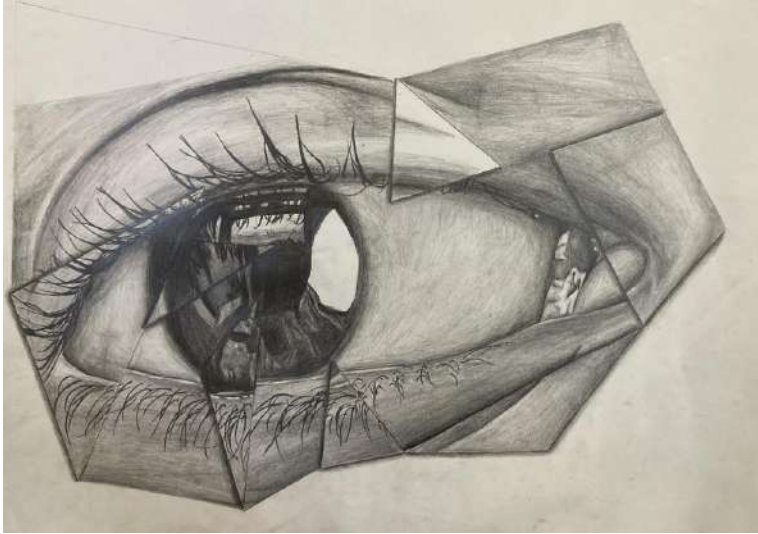


DepARTment



DepARTment

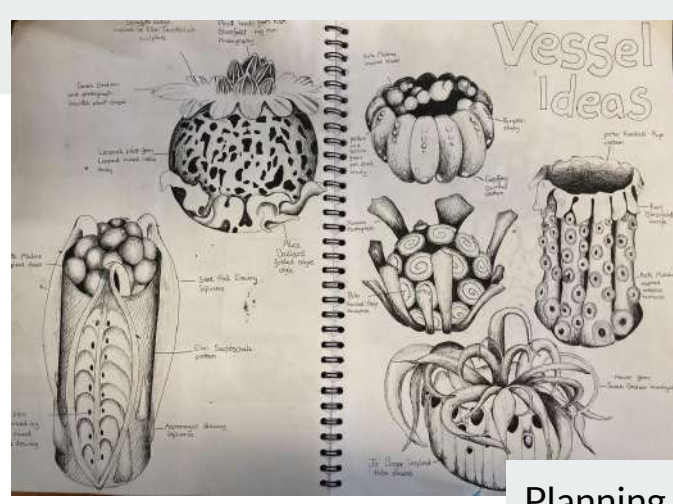
AO4- DESIGN IDEAS, FINAL RESPONSE



DepARTment

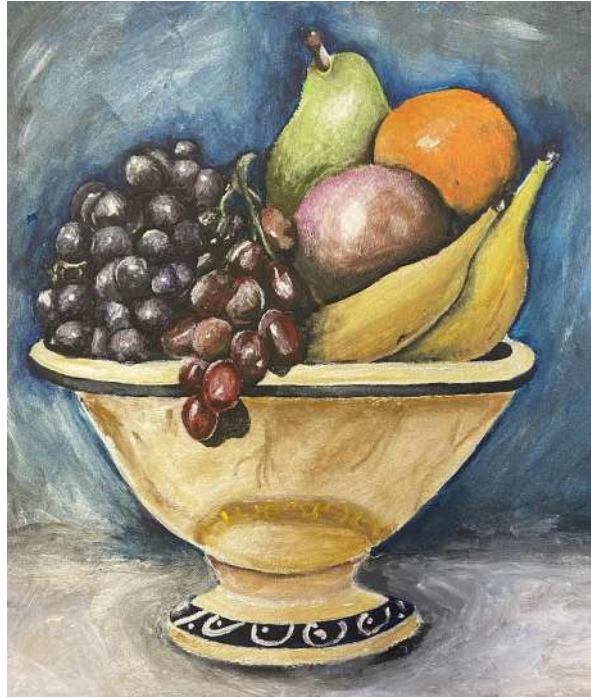


Planning ideas for a painted outcome



Planning ideas for a ceramic outcome





DepARTment



DepARTment



DepARTment

The exam board that we use is



<https://www.ocr.org.uk/qualification/gcse/art-and-design-j170-j176-from-2016/>



Art department contact details

Learning Leader

Catherine.mantle@ewsacademy.org.uk

Class teachers

Michelle.kavanagh@ewsacademy.org.uk

Marika.duplessis@ewsacademy.org.uk