



NEWS FROM ELIZABETH WOODVILLE SCHOOL

MARCH 2021
ISSUE 52

WORLD BOOK DAY WINNERS

THE WINNING ENTRIES FROM OUR WBD
POTATO BASED COMPETITION!

GENEROUS DONATIONS FROM CSSEF

A HUGE THANK YOU TO ALL INVOLVED





highlights

INFORMATION

03 A message from Mrs Matharu

06 COVID tests

14 PSHE Policy

FEATURES

05 Well done Louis!

16 A generous donation from CSSEF

21 Well done JJ!

nEWS

11 Introducing the mental health team

17 News from the Library

20 Welcome to Cucina, our new caterers



Mrs Matharu

Dear Parents and Carers,

It has been a year since COVID 19 started, and we went into our first lockdown. As we approach Easter over 26 million adults in the country have been vaccinated and we can almost see an end to the current lockdown. Easter is a significant time for all celebrating it reminds us of the sacrifices made for the good of others. The last year we have all made sacrifices for the greater good, not seeing family and friends and ensuring we follow the lockdown rules.

As we look ahead to the summer term, I would like to take this opportunity to remind you that it is important we all still follow the rules to prevent an increase in COVID 19 cases and future lockdowns. Over the two week period stay safe and ensure that Government guidelines are followed.

Testing Kits

Students have been given testing kits. A test should be taken every 3-5 days and the results recorded. It is important to log the results with the NHS and let the school know of any positive cases. Please inform positive cases to the school via jane.karaolis@ewsacademy.org.uk The school postcode that is required is MK19 6HN and if the test site ID is required it is EWST. Thank you for your support with this.

Catering

Our new caterers Cucina start after Easter. Cucina are part of the Impact Food Group. Cucina were selected after an intense tender process and have been chosen as the provider for all of the schools across the Trust. They are currently the catering providers at Sponne School and we have heard nothing but good feedback. Their aim is to ensure that food is fresh and as much as possible is made on site.

CONTINUED OVERLEAF



Leavers and new starters

We say goodbye to Miss Simpson at Easter, she has been with the school for over 15 years. I would like to say thank you to Miss Simpson for her hard work and commitment to the school. We wish her all the best in her future endeavours.

We also say goodbye to Mr McPherson, our site services team member. Mr McPherson was also an ex-student of EWS; we wish him all the best for the future.

We would like to welcome Mrs Richardson as our new Business Manager; she will be joining us in the summer term.

Year 6-7

We still have a few places left on our South site for new year 7's. Please contact the local authority admissions service for further details.

Uniform

Thank you very much for your continued support in maintaining high standards of uniform. Please can you ensure that if your child is missing items of uniform such as shoes or the correct trousers, they are in the right ones after Easter. If you need any support or have any concerns regarding this, please contact Mr Brennan (North) or Miss Gilligan (South).

And finally....

I hope you all have a good Easter break, please keep safe. We will reopen on Monday 12th April as normal for all students.

Yours sincerely

Mrs Matharu
Headteacher

Young Hero Award

Well done Louis!

A huge congratulations to Louis Roberts in Year 7 who has been recognised for his huge efforts in the local community.

Louis has been spending his exercise time in lockdown litter picking in his local area. After starting out with his Nan's litter picker, he then used his pocket money to buy his own picker and loop for the bin bags.

When PC Hannelly met Louis she was so impressed by his selflessness that she got in touch with the High Sheriff of Buckinghamshire to let him know about this young role model and Louis was awarded the Young Hero award at the Buckinghamshire High Sheriff's Awards.

You can read more about the fantastic work that Louis has been carrying out in his local community here:

- <https://www.mkfm.com/news/local-news/selfless-12-year-old-boy-from-milton-keynes-wins-young-hero-award-for-litter-picking/>
- <https://www.facebook.com/473891856476607/posts/1026629487869505/>

'Selfless' 12-year-old boy from Milton Keynes wins Young Hero Award for litter picking

News Home More from Local News

Sunday, March 21st, 2021 10:02am

Louis, a 12-year-old boy from Milton Keynes, has been awarded the Young Hero Award at the Buckinghamshire High Sheriff's Awards this week for litter picking in his local area during lockdown.

While many of us have spent the majority of the last year inside, one 12-year-old boy decided to make a huge difference by sacrificing his free time to help clean up his local area and better the community.

A spokesperson from Thames Valley Police described Louis inspiring story by saying: "A special Young Hero Award was presented to 12-year-old Louis from Milton Keynes who has been using his exercise time during lockdown to litter pick in his local area."



TVP Milton Keynes
21 March at 09:33 · 🌐

This is Louis 🙌

When PC Hannelly met Louis, she learned that he had been spending his exercise time in lockdown litter picking in his local area.

After starting out with his Nan's litter picker, he then used his pocket money to buy his own picker and loop for the bin bags.

You may have noticed the impact of Louis' handiwork and that's all he wants-to provide a nice environment for everyone living locally 🌱

PC Hannelly was so blown away by his selflessness that she got in touch with the High Sheriff of Buckinghamshire to let him know about this young role model.

🏆 12-year-old Louis won the Young Hero award at the Buckinghamshire High Sheriff's Awards this week.

Louis' mum told us that he was overwhelmed by the award and that she was bursting with pride 😊

Read more about all the award winners at <http://orlo.uk/CM9NK>





Covid 19 Test kits

About 1 in 3 people with coronavirus do not have symptoms but can still pass it on to others. Regular testing of people without symptoms is important to help stop the virus spreading and protect your loved ones. As lockdown restrictions gradually ease we all need to play our part to help protect each other.

The following people in England will have access to regular rapid lateral flow testing made available to them:

- secondary school pupils and college students
- staff of primary and secondary schools, nurseries and colleges
- households, childcare and support bubbles of early years children, nursery children, primary and secondary-age pupils and college students
- households, childcare and support bubbles of staff of nurseries, primary and secondary schools, and colleges
- anyone who works in an occupation related to a childcare provider, school, nursery or college, and their household, childcare and support bubbles

Children of primary school age or younger will not be asked to test at this time.

How to get a rapid lateral flow test

There are different ways to get a test for pupils, students and staff of nurseries, schools and colleges, and members of their households, childcare and support bubbles in England who do not have symptoms of coronavirus.

You can find out more here:

<https://www.gov.uk/guidance/rapid-lateral-flow-testing-for-households-and-bubbles-of-school-pupils-and-staff>

Easter Football Camp

MK Dons Set are offering a football camp to 'football crazed' Year 9's. They are offering:

- High quality themed sessions each day with drills designed to improve key football skills and techniques
- Fun games skills challenges
- Small sided games and tournaments
- Fun and friendly environment for players of all abilities
- COVID procedures in place making the environment as safe as possible

You can find more info:

<http://www.mkdonsset.com/football/holiday-courses>

Higher Education Webinars

Universities offer informative and helpful webinars on all kinds of topics. There are general ones about subjects like finance and UCAS applications, and subject specific sessions to suit your course preferences. Browse the UK University Webinars calendar to find out which ones can help you.

You can find more information here:

<https://www.universityfinder.org.uk/webinars>

ROADE COMMUNITY LARDER



EASTER CHOCOLATE APPEAL

EGGS, MINI EGGS, CHOCOLATE BARS

FOLLOWING THE WONDERFUL CHRISTMAS CHOCOLATE APPEAL, PLEASE HELP US SUPPLY SOME EASTER CHOCOLATE TREATS WITH THE VILLAGE FOOD BOXES THIS EASTER.

Small is beautiful - and that way it will fit in the box!

Support your local shops by purchasing donations and leaving them at the collection points by Monday 29 March (or earlier). Donations purchased elsewhere are also welcome, but it would be great to buy local. Thank you! Collection points at the following locations:

BP GARAGE

POST OFFICE

RAISA'S

T & H NEWSAGENT

www.facebook.com/roadecommunitylarder

or call 07941 238444 to arrange collection



Deanshanger Easter Trail



Saturday 3rd April 2021

Download your Easter Activity Guide (including the trail sheet) from the DPC website or pop into the Co-Op from 27th March to pick one up.

Your trail sheet must be returned to the Co-Op postbox in store by 5pm the same day, to be entered into the prize draw.

Prizes will be delivered to winners that evening.

For more information, please check out the local community groups on Facebook (Deanshanger What Matters to Us and Deanshanger Community Group) as well as the Deanshanger Good Neighbours Facebook Page.

This event has been coordinated by Deanshanger Good Neighbours, a working party of the Parish Council





EASTER WINDOWS



Decorate your window with an Easter theme, and you could win a prize!

1) Be creative! There are some Easter colouring sheets available in the Co-Op which can be coloured in and cut out to make your display.

2) Post a picture of your window to the Deanshanger Parish Council Facebook page (www.facebook.com/deanshanger.parishcouncil.92)

3) The selected winner will win this amazing Easter themed cake, provided by Deanshanger Good Neighbours!



Closing date for entries: 03/04/2021 at 5pm

Meet the EWS Mental Health Team

I think we can all agree that 2020 was a challenging year and at EWS we are passionate about the mental health of our students and staff. To help support Team EWS, we have established a Mental Health team on our North and South campuses

The purpose of the Mental Health team is to promote good mental health and emotional wellbeing as well as striving to achieve a culture of talking about how we feel and remove the stigma surrounding mental health. We are developing a whole school approach as well as teaching our students about mental health and wellbeing through a programme of PSHE. The team are not trained medical professionals but we will seek to help and support students by identifying emerging mental health needs as well as making referrals to specialist mental health services.

There are also some fantastic free services that you can connect with outside of school hours such as:

The School Nurse: text chathealth on 07507 329600

www.childbereavement.org.uk

Shout (in partnership with Place2Be): text CONNECT to 85258

Childline: call 0800 1111

Samaritans: call 116 123

Northamptonshire CAMHS Connect Consultation Line: 0300 1111 022, Option 1, Option 1.

CAMHS Live messaging service on www.nhftnhs.uk/camhslive Both are open 9am to 9pm.

The Mix: telephone Line open 4-11pm every day on 0808 808 4994. You can email and they will respond within 24 hours on <https://www.themix.org.uk/get-support/speak-to-our-team/email-us> Group Online Chats and Crisis Messenger text THEMIX 85258 Open 24/7 <https://www.themix.org.uk/get-support/speak-to-our-team/crisis-messenger>



Fun Facts about Easter:

Sales in the Easter period make up 10% of the UK's chocolate spend over the course of each year.

The largest decorated Easter egg in the world is found in Brazil. It took 48 days to construct and is 49 feet tall and 28 feet wide.

The UK's first chocolate egg was made by Fry's of Bristol in 1873.

In 1875, John Cadbury introduced the first Cadbury Easter egg.

The first ever Easter was about a man who worked in a carpenter's shop until he was 30. Then, for three years he was a travelling preacher. He never wrote a book. He never had his own family or owned his own home. He never travelled 200 miles from the place where he was born. He did none of the things that usually accompany greatness. He was only 33 when the tide of public opinion turned against him. His friends ran away. One of them denied him. He was turned over to his enemies. On Good Friday, Christians remember his death and on Easter Sunday, they celebrate that he came back to life. Approximately 2000 years later, Christians still remember and celebrate the act of sacrifice Jesus made and they remember the hope this brings. A hope that comes from forgiveness for all the different ways people mess up and the opportunity of a fresh start, a new beginning.

Having joined EWS very recently as the new Ethos lead, I am experiencing a new beginning in my own life. As we come out of lockdown and head towards the spring and summer, there is the hope of a new beginning for us all. Happy Easter.

Gemma Brown



In our Easter assembly, students considered the impact Jesus made on a Roman soldier and the impact he has on Christians today.





I wonder Wednesdays

Have you ever wondered why Psychology is considered a science? What it's like to be a paramedic? What it takes to organise a festival?

If you're in year 11,12 or 13 take a look at 'I Wonder Wednesdays'!

'I Wonder Wednesdays' is a series of online taster sessions designed to help you explore the subjects that interest you and discover what it would be like to study them at the University of Suffolk.


You'll meet one of our lecturers and have the chance to ask any questions about the subject and about the University of Suffolk. They're also a great way to demonstrate interest in your subject when writing your personal statement.

You can book a place here:

<https://www.uos.ac.uk/lwonderwednesdays>

Sessions include:

- Engineering, Arts, Science and Technology
- Social Sciences and Humanities
- Health and Sport Sciences
- Business



Personal, Social, Health and Economic (PSHE) education programme.

As a part of your child's education at EWS, we promote personal wellbeing and development through a comprehensive Personal, Social, Health and Economic (PSHE) education programme. PSHE education is the curriculum subject that gives young people the knowledge, understanding, attitudes and practical skills to live safe, healthy, productive lives and meet their full potential.

PSHE education is taught throughout the school in every year group and is monitored and reviewed regularly by the staff and governing body.

Please visit the school's website: <http://ewsacademy.org.uk/wp-content/uploads/2021/01/EWS-PSHE-Policy.docx.pdf> for more detail about our PSHE curriculum. All PSHE teaching takes place will take place in a safe learning environment and is underpinned by our school ethos and values.

If you have any feedback on our school PSHE policy or the topics we should cover and when please email Rebecca Griffin on the email provided below. As a school community, we are committed to working in partnership with parents; recent parental feedback has indicated that the overwhelming majority of parents continue to be highly supportive of the relationships and sex education programme.

If you would like to find out more or discuss any concerns, please email me at school on rebecca.griffin@ewsacademy.org.uk

Mrs Griffin

PSHE Update

PSHE News

In Terms 5 & 6 students are going to be looking at relationships and sex education. Below is what each year group will be learning about in tutor time:

Year 7 will be learning about building relationships. These lessons will teach students about self-worth, romance and friendship (including online) and relationships boundaries.

Year 8 will be learning about identity and relationships. These lessons will teach students about gender identity, sexual orientation, consent, 'sexting' and an introduction to contraception.

Year 9 will be learning about intimate relationships. These lessons will teach students about relationships and sex education including consent, contraception, the risk of STIs and attitudes to pornography.

Year 10 will be learning about addressing extremism and radicalisation. These lessons will teach students about communities, belonging and challenging extremism. The later lessons will then teach students about different families and parental responsibilities, pregnancy, marriage, changing relationships and forced marriages.

Year 11 will be learning about communication in relationships. These lessons will teach students about personal values, assertive communication (including in relation to contraception and sexual health) relationship challenges and abuse.

Sixth Form students have a session of PSHE timetabled each week, in Term 5 Year 12 students will be focussing upon their Post 18 options and choices with Year 13 learning about healthy relationships and sexual health.



Thank you to CSSEF!

We have had 37 clear face masks donated from a charity called CSSEF for our teachers who regularly teach our hearing impaired students. Chloe's and Sophie's Special Ears Fund (CSSEF) is a small charity aiming to 'Brighten the lives of Deaf children'.

CSSEF is inspired and motivated by Chloe and Sophie Jackson. Chloe and Sophie are sisters and both live in Aldershot, Hampshire. When Chloe was 4 years old, her parents went along to a routine yearly hearing test. Chloe's parents were told the words they never thought they would hear, Chloe was deaf. A question mark hung over Sophie's hearing. After being told Sophie could hear on many occasions, her parents were told that Sophie was deaf as well. Shortly after Chloe started school, her parents found out there was things out there that could help her hear more in the classroom and school.

Initially, CSSEF was a community fund, raising pennies to put hessian and thick pile rugs into Chloe's classroom. A lot of friends and family got behind the Jackson family and with this, on 21st October 2010, CSSEF was founded.

As CSSEF grew, it became apparent to us as a family, that not only Chloe and Sophie would be in need of deaf equipment. They soon realised that many other children could benefit from what they do as a charity. Their main aims are:

- To raise deaf awareness in the local community;
- To enhance the sound acoustics in classrooms and school halls, for deaf children in mainstream schools through specialist equipment and materials.
- To provide resources and equipment to deaf children to support their emotional wellbeing.

You can out more about the charity here: <http://www.cssef.org.uk/index.html>



It has been so nice to see the students back at school. It's been especially nice to have the year 7's back in the mini libraries.

Over this term there have been competitions and we are planning more for next term. There have been some new books added to the library for students to enjoy and more will be added throughout the rest of the year.



ACCELERATED READER – STAR QUIZZERS

Our students have been amazing at reading and quizzing this term. We have our termly prize of £5 amazon voucher for our two Star Quiz winners. They are Alfi Crook 7SBN for North and Camila Clark 7LCY for South. Well done and keep quizzing.



'TOP READER' COMPETITION RETURNS

This competition returns next term. All you need to do is review the book you have been reading and quizzing on. Bring your review to the mini library and the student who reads and reviews the most books by the end of the term wins a prize.

WORLD BOOK DAY COMPETITION: BOOK JACKET POTATO

Thank you to all of the students and members of staff who took part in this year's competition but we could only have 3 winners. Our winners for our first annual WBD Competitions are Olivia Burrows 7LCY, Ryan Holman 7KWN and Ryan Dunkley 8FLS. Well done. Don't worry we will be doing this again next year. So if you want to be in with a chance to win make sure you enter.



Ryan's Where's Spuddy



Olivia's Aslan



Ryan's Spud-nana's

FORM COMPETITION

We are also launching a competition between form groups in year 7 on both sites. It starts the first week back and runs until the last week of next term. Everytime a student reads and quizzes the number of words they have read is added to a class word count. The form at the end of the term that has read the most words will win a prize for their form to enjoy. Which form is going to win? Watch this space to find out.

WORD COUNT

CHALLENGE

Form groups will pit themselves against each other for the chance to win a prize at the end of term.

All you have to do is...

Read and Quiz

Each week you can see your teams progress in the mini library. The winning target is 1,000,000 words.

Which form will win?

A warm welcome to Cucina

Our new caterers Cucina start after Easter. Cucina are part of the Impact Food Group. Cucina were selected after an intense tender process and have been chosen as the provider for all of the schools across the Trust. They are currently the catering providers at Sponne School and we have heard nothing but good feedback. Their aim is to ensure that food is fresh and as much as possible is made on site.

Cucina are an entirely food-led business. That may sound obvious from a caterer, but we're not a typical education caterer; food is in our DNA, meaning we have the skills to make all of our food on site and from scratch every single day. Cucina menus are full of goodness and nutrition as we love educating students that healthy food is delicious. By creating a wide variety of tasty dishes that students love to eat, we help make break and meal times that little bit more special. In teaching them nutrition doesn't come at the sacrifice of flavour, it embeds an ethos around food that sets positive foundations for life and a love of all things food.

You can find more information here <https://www.youtube.com/watch?v=KMjK9ZFTZEY> and information can be found here about COVID safety <https://www.youtube.com/watch?v=kC0x95GeQ10>

Cucina

YOU'VE GOT 1001 THINGS TO DEAL WITH...

Why not let us do the food and we'll help make the school routine that little bit easier?



From street food style chicken tikka wraps and halloumi burgers through to traditional roasts and our famous fish and chip Friday, we've got something for everyone and to suit all budgets.

WE CAN'T WAIT TO SEE YOU SOON!



Well done JJ!



Local hero Freddie Hunt or Farmer Fred as he is known locally has raised £840.00 for the NHS by selling calendars. Freddie who is coming up to two (pictured below with his brother JJ) sold calendars to friends, family members and his father's customers (Hunts Butchers in Greens Norton) for £5 each. Freddie featured in the calendar feeding his animals and taking them for walks.

JJ, a student here at EWS, has been busy raising money for the NHS. In addition he has helped in the shop's Easter Raffle and he has raised £4000 for the children's ward. A huge well done JJ!

Challenge ends
12th March
You still have time!



EWS Sport Challenge

100 human powered miles

@EWSPEdept

Awards so far

Bronze (25miles)

Silver (50miles)

- +Holly Burford (Y7) 89 miles
- +Amelia Heap (Y7) 25 miles
- +Sophie Davidson (Y7) 25 miles
- +Georgia Knight (Y7) 25 miles
- +Fletcher Fellows (Y7) 50 miles
- +Lewis Bromley (Y7) 50 miles

Gold (100miles)

Challenge Completed

- +Oliver Long (Y7) 100 miles
- +Ryan Dunkley (Y8) 100 miles
- +James Hogg (Y7) 100 miles

A parent/ carer's guide to STUDENT FINANCE

Are you the parent or partner of someone applying for student finance? Here's everything you need to know. Content provided by Student Finance England.

WHAT'S AVAILABLE?

While at university or college, your child or partner will have two main costs – tuition fees and living costs. They can apply for student finance to help with both.

All eligible students can get a:

- Tuition Fee Loan to cover the full cost of the fees charged by their university or college
- Maintenance Loan to help with living costs, such as rent and bills- The basic rate of Maintenance Loan doesn't depend on your household income, but they can apply for more that does. Any loans they borrow have to be paid back, but not until they've finished or left their course, and their income is over the repayment threshold.

There are also grants available for students who have a disability, including a long-term health condition, mental health condition, or specific learning difficulty, or students who have children or an adult dependant who depends on them financially. These don't usually have to be paid back. A student's university or college may also offer bursaries, scholarships, or other kinds of financial help – it's always worth checking with them too.

HOW DOES HOUSEHOLD INCOME AFFECT STUDENT FINANCE?

You might need to give Student Finance England information about your income if your child or partner has applied for student finance that's based on your household income.

You'll be asked for financial details for the last full tax year previous to the start of the academic year. For example, if the student is applying for the 2021/22 academic year, the tax year will be 2019/20. Student Finance England will ask for details of the previous tax year because this is the most recent full tax year at the time applications open.

Your information will be used to work out if your child or partner can get extra Maintenance Loan on top of the Tuition Fee Loan and basic Maintenance Loan. If your income in the current tax year is likely to be at least 15% lower than the previous tax year, Student Finance England can assess your household income on what you estimate your income will be.

SUPPORTING YOUR CHILD'S APPLICATION

If you're supporting your child's application, your household income is the combined income of you and:

- your child
- your spouse
- your partner

If you're married, Student Finance England will need your spouse's income even if you don't live together, or they're not the student's parent.

If you live with your partner, they'll need to tell Student Finance England about their income even if you were not living together during the tax year being asked about.

A parent/ carer's guide to STUDENT FINANCE

If you're separated or divorced, your child should tell SFE who they live with or have most contact with. If they spend an equal amount of time with both of their parents, they'll be asked to pick who will support their application.

Remember, household income is based on your circumstances at the start of the academic year. This means that if you get married or start living with your partner before the start of the academic year, Student Finance England will need their details.

Household income doesn't include any income the student might have from working themselves.

HOW TO SUPPORT A STUDENT'S APPLICATION

Once your child has applied for student finance, you'll get an email within 24 hours with a link to submit your household income details.

You'll need to create an account if you haven't got already got one. You must use your own account – you can't use the same account as your child or partner. When you register, you'll need to supply your National Insurance number and your personal income for the previous tax year. You should only give Student Finance England your details – if you live with a partner, they'll ask for their details separately.

HM Revenue & Customs (HMRC) will check that the information you've submitted matches their records. Student Finance England might ask you to send evidence if the details don't match.

You can submit an estimate of your financial details for the current tax year, if you think your household income will be at least 15% lower than the previous tax year.

Read Student Finance England's guide to find out how to do this, and to download a Current Year Income (CYI) application form. You can find this here:

<http://media.slc.co.uk/sfe/currentyearincome/index.html>

You should send Student Finance England copies of any financial documents they ask for – they'll destroy these securely once they've checked them.

WHEN?

It takes at least six weeks to process applications, so it's important you send any evidence Student Finance England needs as soon as possible, so your child gets any extra money in time for the start of their course.

OTHER USEFUL RESOURCES:

<https://www.gov.uk/student-finance-register-login>

<https://www.ucas.com/student-finance-england/student-finance-guidance-parents-and-partners>

<https://images2.moneysavingexpert.com/attachment/StudentFinance2011.pdf>

<https://www.savethestudent.org/student-finance/parents-guide-tips-university.html>

<https://www.theuniguide.co.uk/advice/advice-for-parents/parents-what-you-need-to-know-about-student-finance>

CELEBRATING SUCCESS

Students in each year group have been rewarded by their teachers for exemplifying the school's values

Year 7 South

Leadership

Eva Gypps
Sophie Skinner
Poppy Alexander-Owens
Fletcher Fellowes

Ambition

Ollie Metcalfe
Darcey Fernandez
Isabel Jones
Hannah Tully

Curiosity

Josh Brown
Luke Bishop
Alfie Rees
Oliver Spencer

Confidence

Ruby Hooper
Chris Chankanunga
Adam Clarke
Samuel Watson

Respect

Ashdon Mann
Camila Clark
Theo Poole
Lily Croney

Year 7 North

Leadership

Wyatt Crouch
Danny Devonshire Conway
Josh Adams
George Farnell
Shay Lynch

Ambition

Jacob Nixon
Lily Braddick
Will Ritchie
Olivia Musselwhite
Owen Johnson

Curiosity

Sophie Cory
Milli Raynes
Claudia Johnson
Ethan Foster
Ava Tibble

Confidence

Adrian Puzio
Queenie Smith
Grace Rackham
Isabella Ryall
Brandon Keech

Respect

Jonah Williams
Toby Cox
Rose Kelly
Ben Harmer
Sophie Gibbs

CELEBRATING SUCCESS

Students in each year group have been rewarded by their teachers for exemplifying the school's values

Year 8 South

Leadership

Freya Glover
Asina Santhakumar
Bethan Cursley
Elizabeth Wain

Ambition

Lizzy Clarke
Roscoe Gorse
Leah Daly
Kate Stevenson

Curiosity

Giuseppe Durante
Luke Thody
Millie Harris
Holly Alexander

Confidence

Charlotte Ward
Joe McMahon
Nathan Peter
Amelia Avery

Respect

Xavier Dolan
Dan Mallabar
Olivia Brown
Will Philbrick

Head of Year Award

Tressa Hobbs
Neve Ginn
Rosie Conisbee
Nattacha Eames

Year 8 North

Leadership

Ryan Dunkley
Niamh Gillson
Ruby Wood
Catalin Lisnic

Respect

Mia Philips
Sophie Coles
Tom Exley
Fintan Parker

Ambition

Bethan OMay
Hamza Otu
Scarlett Rogerson
Josephine Quelch

Curiosity

Asa Pinder
Scarlett Jones
Ellie Markham
Bella Quelch

Confidence

Georgia Sparks
Liam Critchley
Alexia Harper
Kaide Stephens

CELEBRATING SUCCESS

Students in each year group have been rewarded by their teachers for exemplifying the school's values

Year 9 South

Leadership

Georgia Hogg
Nathan Grove
Talia Gale
Evie Bywater

Ambition

Luke Webster
Kieran Francis
Harry Haynes
Dylan Warner

Curiosity

Grace Blackmore
Amy McEwan
Alex Tosh
Treasure Belonwu

Confidence

Lizzie Blackmore
Oscar Marshall
Caitlin Greshon
Alex MacLean

Respect

Harry Ransley
Freya Ward
Grace Turstain
Jazmine Wilkinson

Head of Year Award

Layla Ginn and Evie R-L.
Ella Conway
Erin and Ryan
Lauren

Year 9 North

Leadership

Ella Marchi
Octavian Sage
Keira Robarts
Ruby Clifton

Ambition

Ryanna Fernandes
Bailey Collins
Ella Tustain
Cian Reyland

Curiosity

Alfie McNicholas
Bea Wilks
Freddie Heavens
Ryley Cleeter

Confidence

Emily Offin
Abigail Bickerdike
James Gellatly
Charlie Gibbs

Respect

Ollie Michael-Johns
Grace Holman
Harry Farbon
Max Thorpe

CELEBRATING SUCCESS

Students in each year group have been rewarded by their teachers for exemplifying the school's values

Year 10 South

Leadership

Frankie Matthews
Ciara Gillan
Michael Huish

Respect

Ellis Tomlinson
Dylan Knowles
Jasmin Wrighting

Ambition

Jessica Judd
Lily Dutch
Charlie Holtz

Confidence

Chloe Stanley
Jamal Johnston
Dylan Ward

Curiosity

Keira Doig
Joseph Ashmore
Chloe Hall

Year 10 North

Leadership

Evan Thompson
Fraser McCallum
Millie Allen

Ambition

Isaac Jones
Reuben Madden
Andrew Li
Isabelle P-H

Curiosity

Emerson Button
Charlotte Brookes
Millie Worsdale
Ben Lawrence

Confidence

Leila Cousins
Kornelia Pusz
Miles Orton
Abhinav Tyagi

Respect

Callum Whitmee
Ellie Godfrey
Ella White
Kallum Ward

CELEBRATING SUCCESS

Students in each year group have been rewarded by their teachers for exemplifying the school's values

Year 11 South

Leadership

Georgia Fowler
Holly Moorecroft
Archie Knox
Olivia Harding

Ambition

Jack Richardson
Lara Chambers
Daniel Woollard
Charlie Jones

Curiosity

Katy Lakey
Ruby Gentle
Lily Major
Aisha Parveen

Confidence

Maddison Jenner
Jacob Glover
George Windless
Evan Wermerling

Respect

Emily Downling
Theo Holtz
Yasmin Cristoe-small
Lily Brown

Year 11 North

Leadership

Karolina Badach
Rebecca Chapman
Joe Heavens

Ambition

Kiera Ford
Aisha Hussain
Jasmine Oakey

Curiosity

Karoline Horlick
Amelia Smith
Jamie Mutch

Confidence

Max Turnball Phillips
Sophie Wilson
Elliot Cooper

Respect

Sarah Van Rouyan
Harvey Marchant
Leo Nightingale

Sixth Form

Leadership: Amelia Marshall

Ambition: Malackey Madden

Curiosity: Annie Skippen

Confidence: Chris Lunn

Respect: Rebecca Nott



ART PORTFOLIO



Y10 Artist of the term, excellent effort and attention to detail
Tilly Masters- 'Coral'

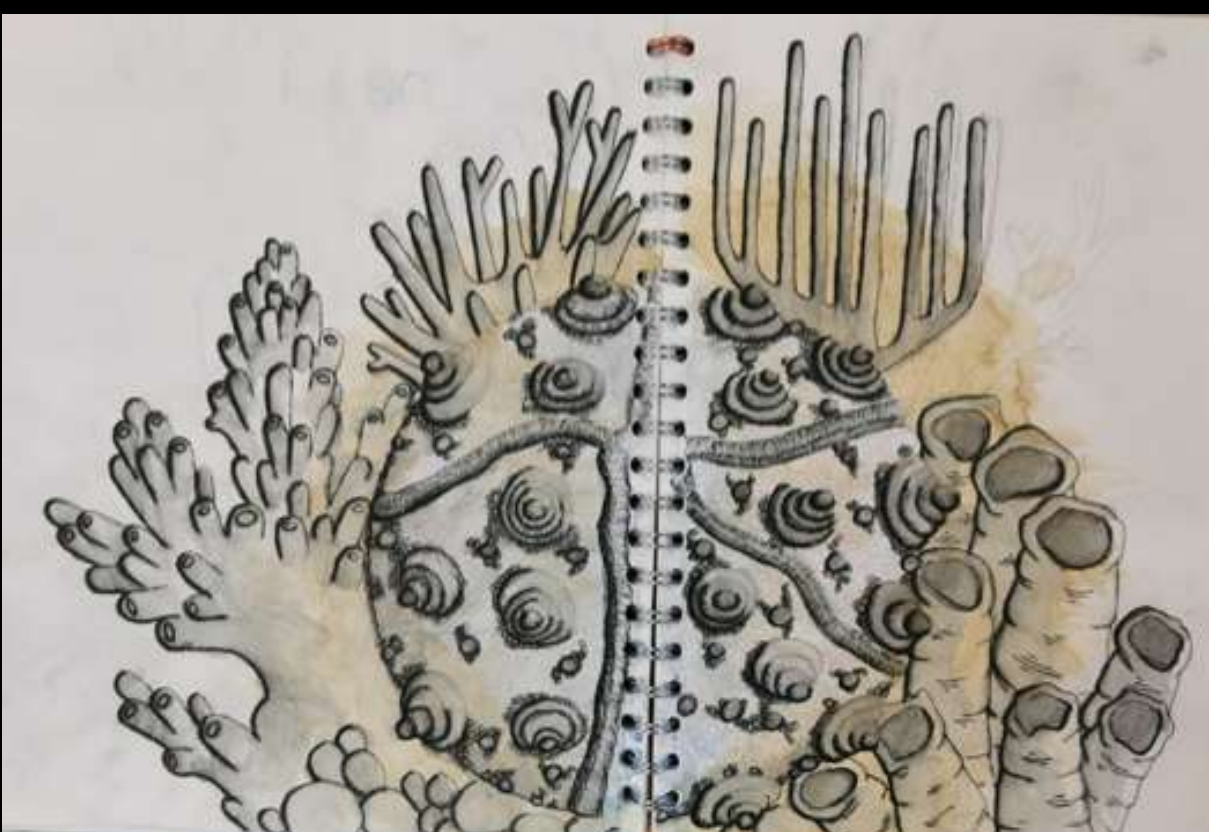
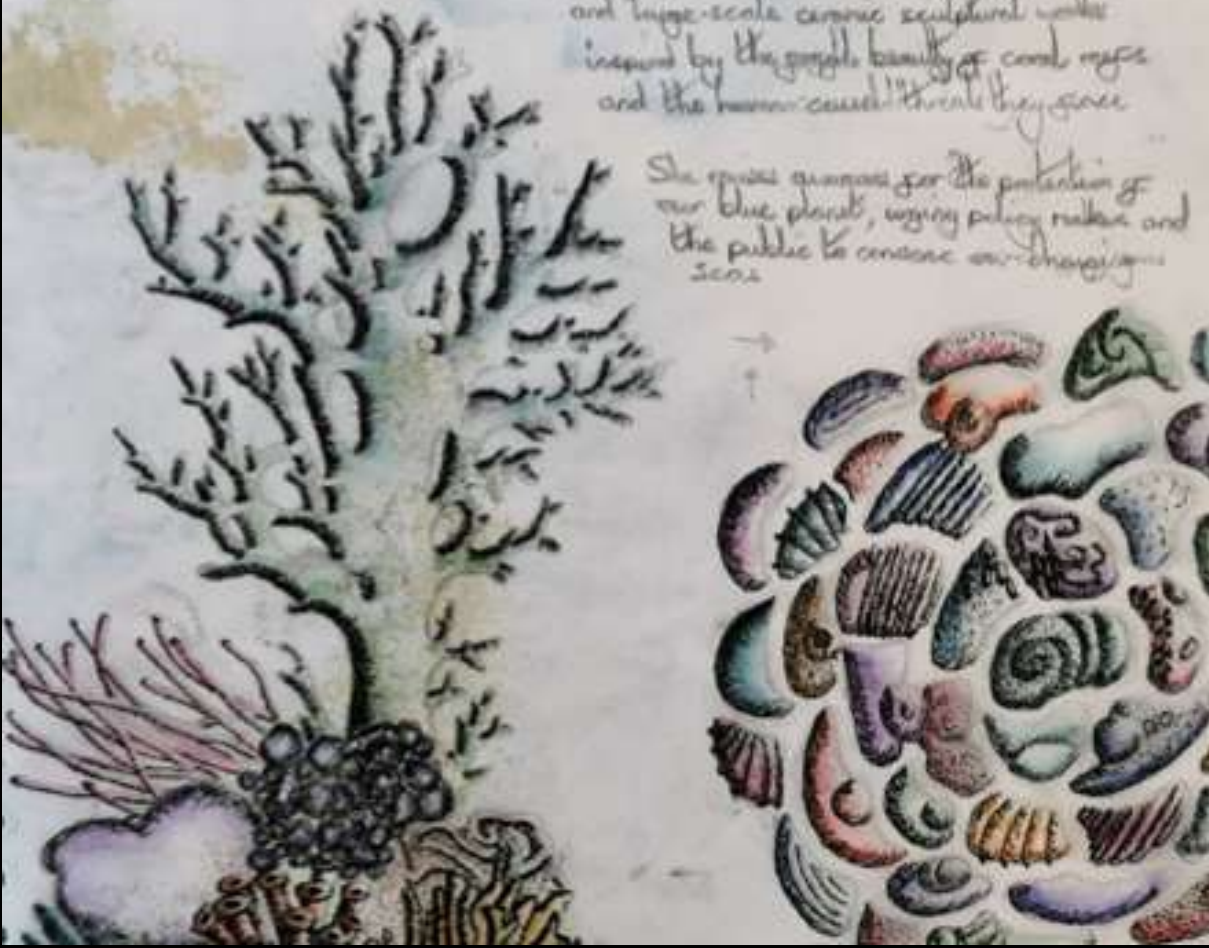


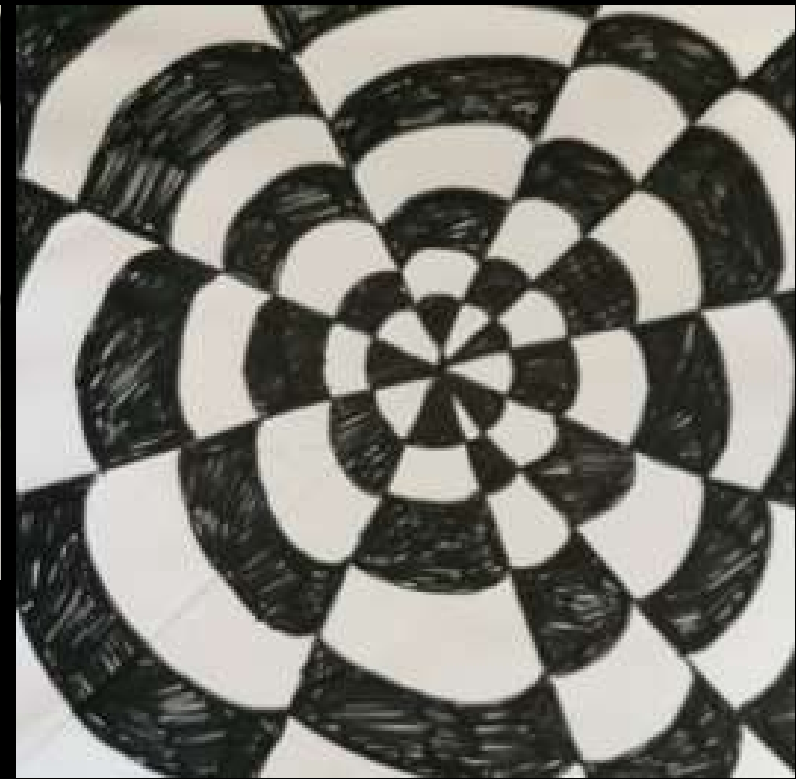
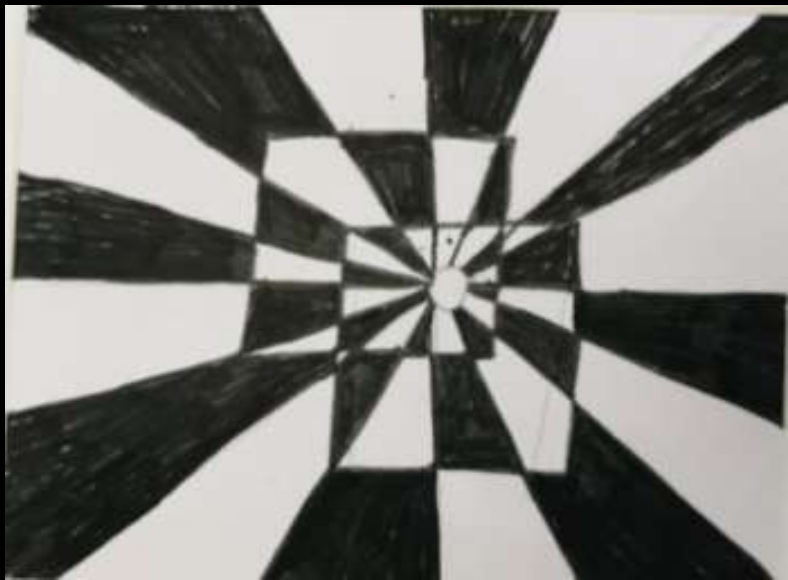
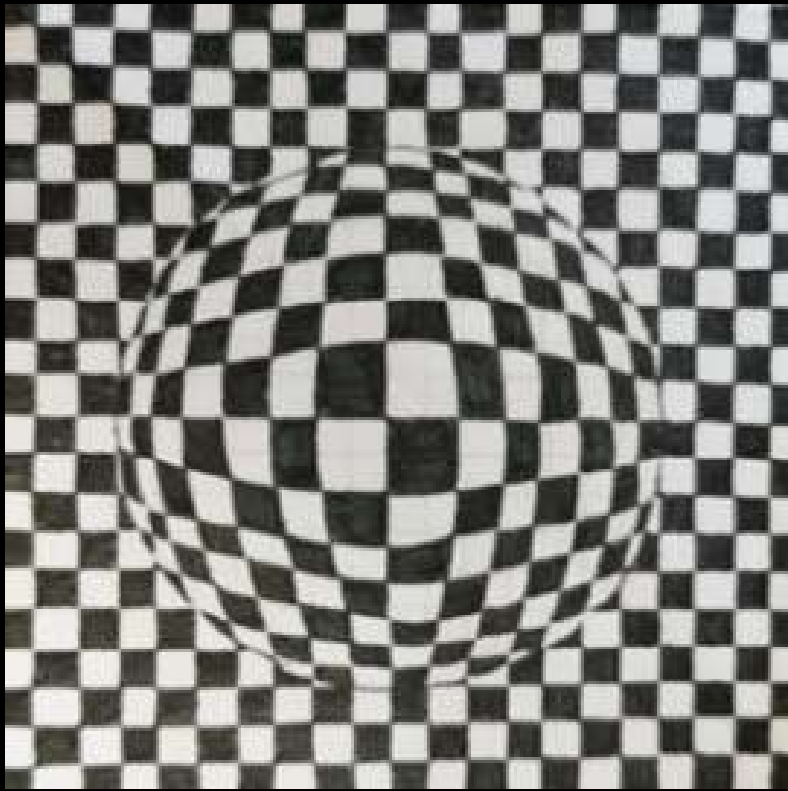
Year 10 Emma Dalling: Close up drawings

Courtney Mattison

Courtney Mattison creates intricately detailed and large-scale ceramic sculptural works inspired by the fragile beauty of coral reefs and the human-caused threats they face.

She raises awareness for the protection of our blue planet, urging policy makers and the public to conserve our changing seas.





Year 9 Optical Art

TOP LEFT AND RIGHT: Nicole Foley

BOTTOM RIGHT: Imogen Perkins

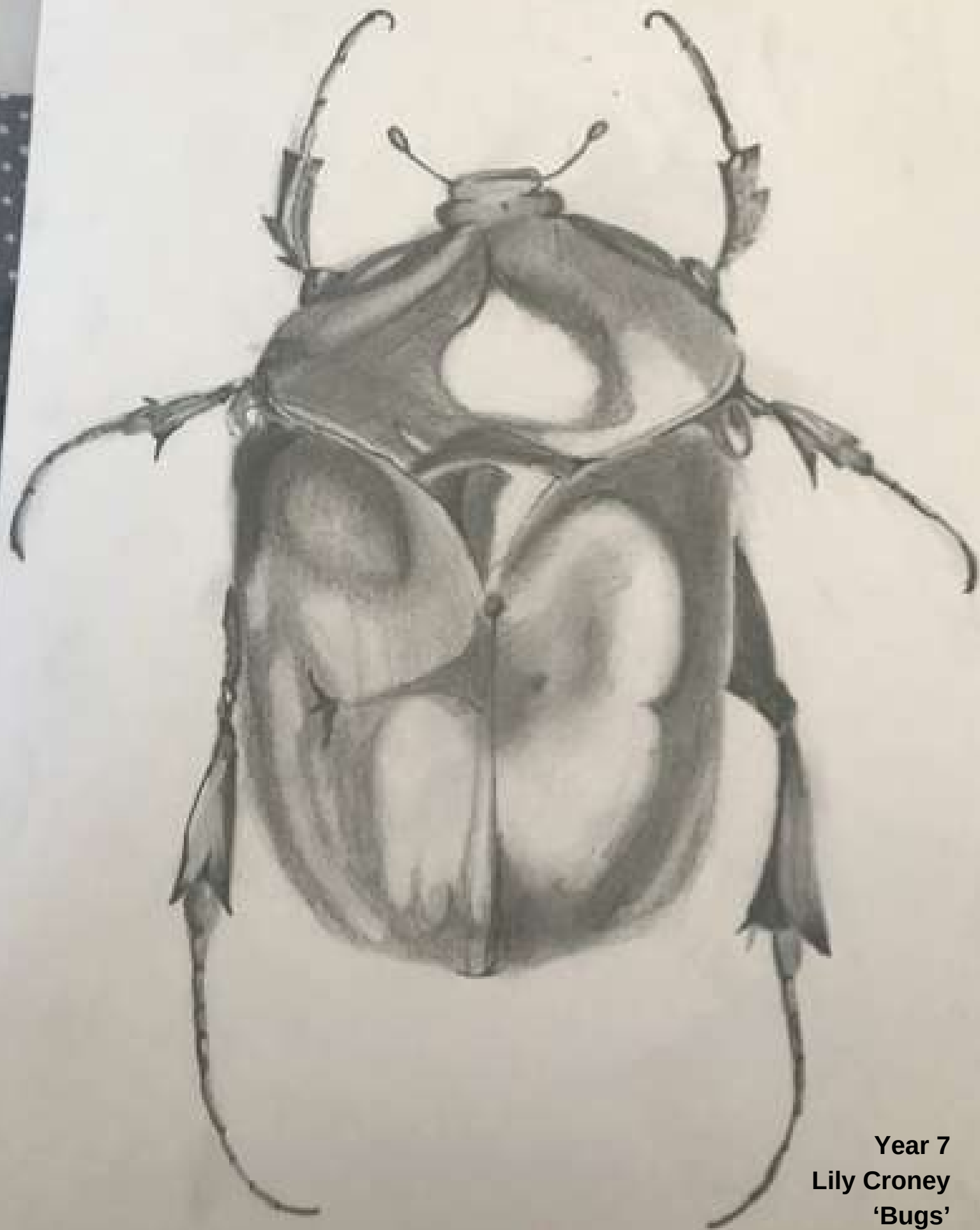
BOTTOM LEFT: Yasmin Letts



Year 7 Artist of the Term

Fantastic blending of colour pencils
and attention to detail.
Sophie Davison



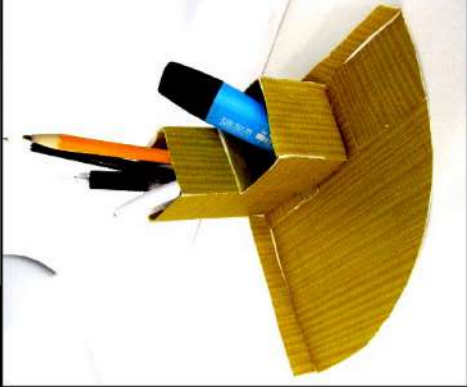
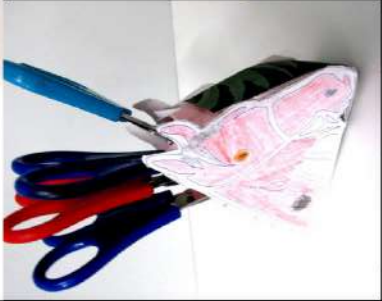
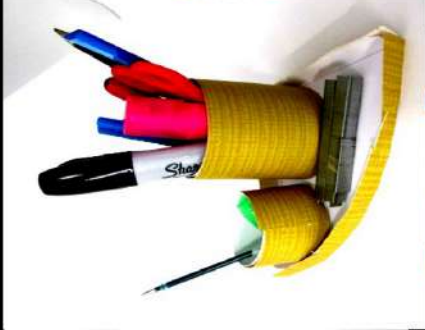
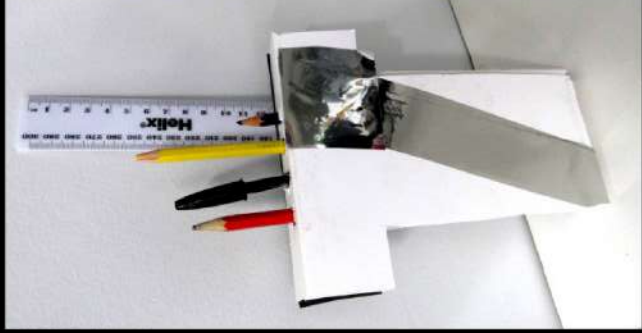


Year 7
Lily Croney
'Bugs'

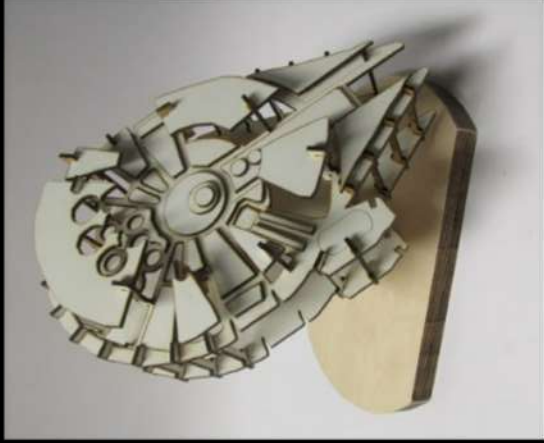


DESIGN AND TECHNOLOGY PORTFOLIO

YEAR 7 DESK TIDIES



YEAR 10 LAMP PROJECT



YEAR 9 CLOCK PROJECT



YEAR 9 CLOCK PROJECT





FOOD TECHNOLOGY SHOWCASE



NORTH SITE CLUSTER - PRIMARY SPORTS UPDATE LEAGUE- TERM 3

VIRTUAL SCHOOL GAMES

Northamptonshire Sport have been setting weekly challenges for students across the county to join in with, whether they were at home or in school. Each week the challenges have been based around a different sport with points being awarded for participation to keep young people active during these challenging times.

Here at EWS I have upped the stakes and have made this into a cluster competition so every week the schools are ranked as if they were in a tournament, gaining points towards becoming the cluster virtual school games champions. I am very pleased to say that not only are we one of the most engaged clusters in the county with these challenges, the individual schools have become rather competitive in trying to better their participation points and overtake other schools in the cluster each week.

Whilst the final results are not yet in the winner and runners up in each set of sporting challenges were as follows:

Sport	Winners	Runners up
Football	Hackleton	Blisworth
Sports Hall Athletics	Hartwell	Hackleton
Boccia	Hackleton	Hartwell
CV Fitness	Hackleton	Roade
Tennis	Hackleton	Roade
Netball	Hackleton	Roade
Orienteering	Roade	Ashton

Final results to follow, but well done to all of these Primary schools for engaging so well in the activities week after week.

VIRTUAL SPORTS HALL ATHLETICS COMPETITIONS

As our annual Year 5/6 sports hall athletics competition is taking place virtually for the first time, I have opened it out to a much wider range of year groups. In several schools, during the last 2 weeks, most, or in some cases all, of years 1 - 6 have competed in a series of different sports hall athletics events, with distances measured and times recorded on their own sites. What a great way to start returning to PE in school!! Results to follow for all 3 age group competitions (years 1 / 2, years 3 / 4 and years 5 / 6).

PE Extra Curricular

North Campus- After Easter

After school Sessions 3:05 - 4:05. Just come along to PE after school.			
	ACTIVITY	YEAR	STAFF
MON	FOOTBALL NETBALL	Y7,8,9 Y7&8	ISN & CRY TCR & CWT
TUE	OCR SESSION	Y9/10	CRY
WED	ROUNDERS/ CRICKET/ ATHLETICS HOCKEY	All Years Yr7,8,9	ISN, CRY, TCR, HBT FLS
THUR	OCR SESSION HOCKEY SESSION	Y11 Y7,8,9	ISN FLS

South Campus- After Easter

	ACTIVITY		YEAR	STAFF
	Lunch	After School		
MON	Tennis (Y11)	Athletics	All	TIY, ESN, CJS, TMN
TUE	Tennis (Y10) TIY	Rounders OCR Coursework	Y7,8,9 Y10	ESN, CJS TIY
WED	Tennis (Y7) TIY	Cricket OCR Coursework	Y7,8,9 Y11	TIY, TMN CTN
THURS	Tennis (Y8) CJS	Tennis	All	TIY
FRI	Tennis (Y9)			

Thank you!

A huge thank you to Darren Wilks, father to Annie and Bea, who very kindly gifted the PE Dept rugby balls, bibs and cones. We are very grateful for your generous donation and will ensure they are put to good use.



NORTH CAMPUS

The Elizabeth Woodville School (North)
Stratford Road
Roade, Northampton
NN7 2LP
T: 01604 862125

SOUTH CAMPUS

The Elizabeth Woodville School (South)
Stratford Road
Deanshanger, Milton Keynes
MK19 6HN
T: 01908 563468



generalenquiries@ewsacademy.org.uk



@Elizabethwoodvilleschool



@EWSacademy_